

# Colonial - Regency



**MF 01 \$9.00**  
**Woman's 18th Century Jumps or Leather stays**  
**Sizes:** Size 8-18. Specify Size  
 Basic foundation garment for Colonial and Georgian women.



*Woman's Shortgown*  
**MF 11 \$13.00**  
**Short gown and Shift with Petticoat Directions**  
**Sizes:** Multisized 12-18  
 Pattern includes cutting diagrams and instructions for a shift and petticoat.



**JR Basic \$17.00**  
**Colonial Basic Kit**  
**Sizes:** (32-34), (36-38), 40-42), (44-46), or (48-50)  
 Chemise, apron, petticoat, short gown, pocket and handkerchief for a complete period colonial look.



**EV 58 \$9.25**  
**Woman's Bodice**  
**Sizes:** Multisized 8-20  
 The bodice was worn over the chemise. The bodice is styled similar to a corset.



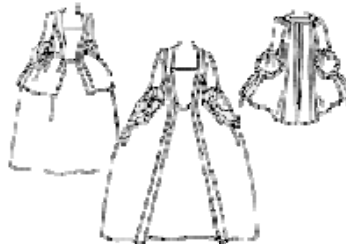
**LF 18102 \$17.50**  
**Canadienne de la Nouvelle-France**  
**circa 1740-1760**  
**Sizes:** Multisized - 36"- 42"  
 Bust Includes a Lined mantelet, "French" and "English" style shifts, Instructions for petticoat, neckerchief and apron.



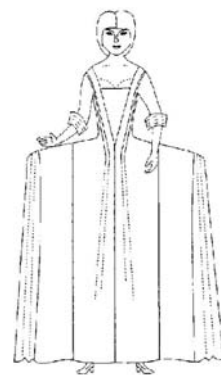
**JR RA \$19.00**  
**Robe à l'Anglaise or English Nightgown**  
**Sizes: 8-22, one size per pattern**  
 The most versatile gown of the 18<sup>th</sup> century! Included is a small sleeve flounce pattern, plus diagrams with instructions for making a petticoat.



**PI 422 \$16.50**  
**Robe a la Francais**  
**Sizes: (6-10), (12-16), (18-22)**  
 Full flowing saque-back gown and petticoat. Opens in the front. Should be worn over pocket hoops or small panniers (See the Accessories Section)



**JR PEL \$21.00**  
**Pet-en-l'air or Robe a la Francaise**  
**Sizes:** 6-24 (One size per package- Specify Size)  
 Pattern includes Pet-en-l'air jacket, sleeve flounces and stomacher. Instructions included for extending the pet-en-l'air into a gown and for a shaped petticoat.



**MM 17007 \$27.00**  
**Robe a la Francaise**  
**Sizes:** Multisized Petite - X-Large.  
 1740-1780 Robe a la Francaise is a truly fascinating style of gown with a Watteau

SEE BACK OF CATALOG FOR ORDERING AND SHIPPING INFORMATION

# Colonial - Regency



**PI 420 \$15.00**  
**1770 Polonaise and Petticoat**  
**Sizes: (6-10), (12-16), (18-22)**  
**Please specify size**  
 This polonaise with box pleated ruffle around the neck has a petticoat to complete the look.



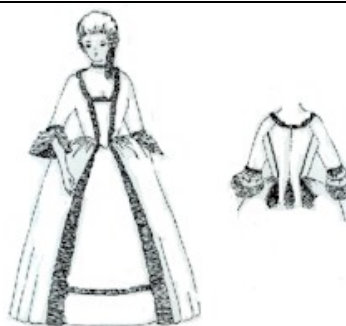
**MF 13 \$13.00**  
**Woman's gown- A Robe Polonaise**  
**Sizes: Sizes 8-18 (Specify Size- one per package)**  
 Includes lined bodice pieces with measurements and diagrams for the skirts, petticoats and overskirts.



**RH 285 \$16.50**  
**Polonaise**  
**Sizes: (S-L), (XL-XXL) Please specify Size**  
 Pattern includes the polonaise, Levite and round gown styles, all in this one pattern. Worn from 1770's to 1780's. Pattern includes petticoat instructions.



**PW 1776D \$16.50**  
**1776 Ladies' Dresses**  
**Sizes: Multisized 10-22**  
 Ladies Dresses from the Revolutionary War Era. Historically accurate.



**WN 204 \$19.00**  
**1770's Gentry Gown**  
**Sizes: Small- Up to 38" Bust, Large up to 48" Bust**  
 Gentry Gown with back pleat. Includes petticoat and stomacher.



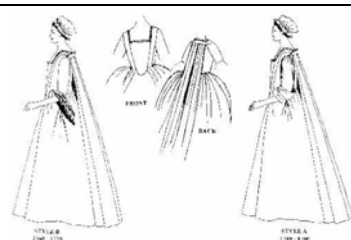
**WN 207 \$19.00**  
**Robe A L'Anglaise**  
**Sizes: 32-36" OR 38-44" Bust (please specify Size)**  
 Popular late 18<sup>th</sup> Century. Includes bum pad. Shown with hat pattern WN 708



**RH 184 \$17.00**  
**Sacque Back Gown & Jacket**  
**Sizes: (8-14), (16-20), or (22-26)**  
 Includes instructions on making pocket hoops, neck ruff, and pinner cap as well. Square neckline



**MF 16 \$16.00**  
**Woman's Robe 'A La Francaise or Robe 'A L' Anglaise**  
**Sizes: Size 12-14 only**



**WN 213 \$28.00**  
**Sacque Back Gown (Robe a la Francaise)**  
**Sizes: Small- 32-36" Bust, Large 38-46" Bust**  
 Two sleeve styles covering the periods 1760-1775 and 1740-1760

**SEE BACK OF CATALOG FOR ORDERING AND SHIPPING INFORMATION**

## Colonial - Regency



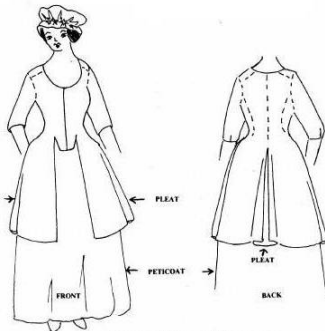
**MF 15 \$16.00**  
**Riding Habit, Jacket, and**  
**Waistcoat w/ petticoat directions.**  
**Sizes:** Small (8-10), Medium (12-14), or Large (16-18)  
 This outfit was normally worn with a riding boots, cocked hat, stock or cravat, and gloves.



**RH 151 \$16.50**  
**Colonial Riding Habit**  
**Sizes: (M-L) or (XL-XXL)**  
**Please specify size**  
 18th Century jacket with waistcoat and riding skirt with several sleeve and neck options.



**WN 208 \$19.00**  
**Summer Chemise Gown**  
**Sizes:** One size fits most  
 Popular from 1765-1795. This gown was usually made of a light cool fabric. Shown here with hat pattern WN 708.



**WN 217 \$19.00**  
**18th Century Caraco**  
**Sizes:** Small- 32-36" Bust, Large 38-46" Bust  
 Petticoat directions included.



**JR Caraco \$17.00**  
**Caraco**  
**Sizes:** (6-8), (10-12), (14-16), (18-20)  
 Long jacket, which may be worn down. Pattern contains Caraco jacket only.



**RH 183B \$11.50**  
**1780's Style Jacket**  
**Sizes:** (S-L) or (XL-XXL)  
 Jacket closes at center front and has curved back skirts. Pattern included ruffled petticoat instructions.



**RH 183A \$14.00**  
**Sacque Back Jacket**  
**Sizes:** (S-L) or (XL-XXL)  
 The sacque back jacket was popular from the early 18th Century until 1770's. Pattern includes petticoat instructions also.



**MF 21 \$11.00**  
**European Bedgown with**  
**directions**  
**for petticoat**  
**Sizes:** Multisized 12-18 Include 18th Century Bedgown with options for sewn-in ties, straight edges, lined or unlined.



**MF 14 \$16.00**  
**Woman's Casaque, circa 1720-1750, with directions for a Robe Battante**  
**Sizes:** One Size fits All  
 The Casaque was worn over a shirt, petticoats & decorative stays.

**SEE BACK OF CATALOG FOR ORDERING AND SHIPPING INFORMATION**

## Colonial - Regency



**MF 17 \$11.00**

**Woman's Caraco**

**Sizes:** Size 12-14 only

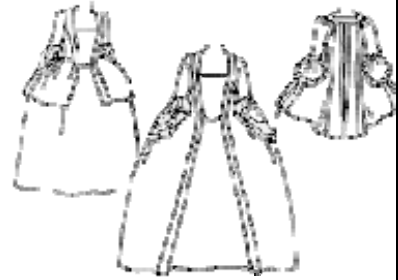
This 18th Century Caraco has options for partial or full lining.



**MF 02 \$11.00**

**Woman's Juste-au-corps**

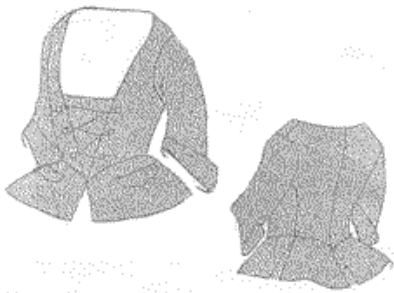
**Sizes:** Size 8-18. Specify Size  
Pattern is sized to fit over stays and was designed for a snug fit.



**JR MDL \$17.00**

**Manteau-de-Lit**

**Sizes:** SM-XXL; please specify size. It can be made into an unfitted bed gown or a T-shaped jacket.



**PI 424 \$10.50**

**Open Front Jacket**

**Sizes:** (6-10) (12-16) (18-20) (24-28)  
1735-1740. Fitted open front jacket held closed with laces. Stomacher pattern included going under front laces. Sleeve is multiple cuff options.



**JR Jacket \$19.00**

**Sizes:** (6-8) (10-12) (14-16) (18-20) (22-24)

**Lady's Jacket**

Interchangeable pattern pieces that may be combined to create an entire wardrobe of 18th century jackets. Four views with additional options



**PI 421 \$11.00**

**Sizes:** (6-10), (12-16), (18-22), (24-28)

**1775 Jacket**

1760-1775 Jacket



**WN 206 \$11.00**

**18th Century Middling Jacket with Optional Kidneys**

**Sizes:** SM (30-36") or LG (38-44")  
Bust Jacket is front lacing. Petticoat directions included. Also includes optional kidneys.



**KK 6501 \$17.00**

**Woman's Bedgown**

**"Manteau de Lit" - 1730-1770**

**Sizes:** Multisized; XS--XXXL

Commonly worn by working class women as day wear. Sleeve style is "en pagoda".



**MF 18 \$19.00**

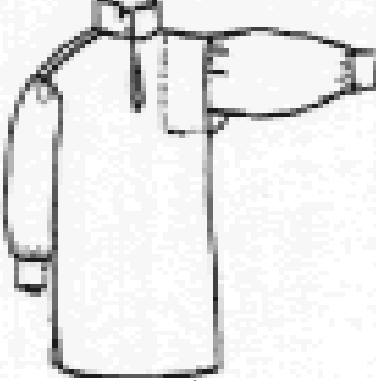
**Men's Banyan and Cap**

**Sizes:** Multisized 34-44" chest  
This Banyan has optional buttons or frogs for front closures. Option for half lining

**SEE BACK OF CATALOG FOR ORDERING AND SHIPPING INFORMATION**

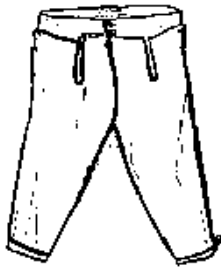


# Colonial - Regency

 <p><b>LF 18001 \$17.50</b>  <b>18th Century French Style Shirt</b>  <b>Sizes:</b> Multisized Sm-XL          French style man's shirt with two styles of sleeves, front and cuff ruffles, a French neck stock in four versions, and work cap.</p>	 <p><b>JR Shirt \$13.00</b>  <b>Colonial Shirt</b>  <b>Sizes:</b> (XS-M) or (M-XL)          Shirt with reinforcement panels, neck and underarm gussets, to be made plain for the common man, or fancy with breast and wrist ruffles for the gentleman.          Three sizes per pattern.</p>	 <p><b>PW Shirt \$16.50</b>  <b>Men's and Boy's Shirt</b>  <b>Sizes:</b> Multisized Boys 8-20 and Men's One-size fits most          Ruffled 18th Century dress shirt.          Boys and men's sizes</p>
 <p><b>PI 756 \$11.50</b>  <b>Men's Work Shirt</b>  <b>Sizes:</b> Multisized 14-17 1/2" Neck          Men's Late 18th or Early 19th century work shirt with either shoulder reinforcement or epaulet.</p>	 <p><b>KK 4101 \$13.00</b>  <b>Man's Shirt 1750-1800</b>  <b>English Style</b>  <b>Sizes:</b> Multisized XS-3X.          Variations of chest and sleeve ruffles. Great pirates shirt.</p>	 <p><b>KK 4102 \$13.00</b>  <b>Man's Shirt 1790-1830</b>  <b>English Style</b>  <b>Sizes:</b> Multisized XS-3X.          Directions for variations of bosom ruffles included.</p>
 <p><b>EV 64 \$9.25</b>  <b>Authentic American Shirt</b>  <b>Sizes:</b> Multisized 36-50" Chest          This square cut Authentic American Shirt was commonly worn for the first 200 years of our country's history.</p>	 <p><b>EV 88 \$9.25</b>  <b>Voyager Shirt</b>  <b>Sizes:</b> Multisized 36-50" Chest          This shirt is designed after shirts worn by the French Voyagers and boatmen in the late 18th century</p>	 <p><b>EV 89 \$9.25</b>  <b>Mountain Man Work Shirt</b>  <b>Sizes:</b> Multisized 36-50" Chest          This shirt is designed after the everyday shirts worn by mountain men in the late 18th century</p>

SEE BACK OF CATALOG FOR ORDERING AND SHIPPING INFORMATION

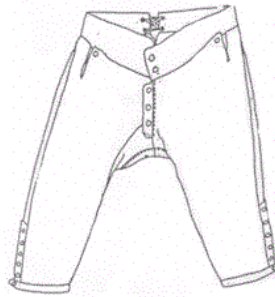
# Colonial - Regency



**PI 776 \$15.00**

## **Men's Knee Breeches**

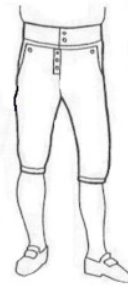
**Sizes:** (34-38), (40-44), (46-50)  
Button up 18th Century breeches  
Back laces for fitted waist. Make  
in velvet, tow, or leather for a variety  
of class looks. Period accurate.



**PI 778 \$14.00**

## **French Fly Breeches**

**Sizes:** (34-38), (40-44), (46-50)  
Button up 18th Century Men's  
French Fly Breeches. 1730's-  
1770's



**RH 203 \$11.50**

## **18th Century Button Fly Breeches**

**Sizes:** SM (34-40) or LG (40-46)  
A style of breeches worn from early  
18<sup>th</sup> century until the 1770's.



**PW Breeches \$16.50**

## **Men's and Boy's Breeches**

**Sizes:** Multisized Men's SM-XL and  
Boy's 8-20. 18th Century breeches  
shown here with the PW Shirt.  
Pattern includes all men's and boy's  
sizes listed above.



**JR Breeches \$17.00**

## **Fall Front Breeches**

**Sizes:** (30-32), (34-36), (38-40),  
(42-44), (46-48)  
Men's fall front breeches, with  
front pockets and optional  
waistband watch pocket, and  
tabs for knee buckles.



**EV 73 \$9.25**

## **Broadfall Drop Front Breeches**

**Sizes:** Multisized waist 30 – 42"  
Breeches worn by both military and  
civilians in the 1700s and early  
1800s. Leather inst. Included.



**MF 08 \$11.00**

## **Man's Drop Front Breeches**

**Sizes:** Small (28-30"), Medium (32-  
34"), or Large (36-38" waist).  
Drop front breeches with 2 pockets.  
Breeches are worn low-rise.



ad by

**SF 203 \$11.00**

## **Military Overalls Pattern**

**Sizes:** Multisized; Contains  
waist sizes 36-48.  
Revolutionary War overalls.  
Instructions included for  
proper fit. Broadfall front.



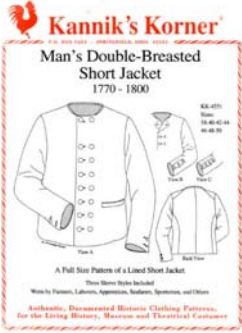


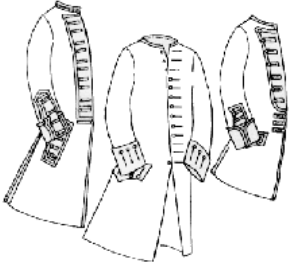




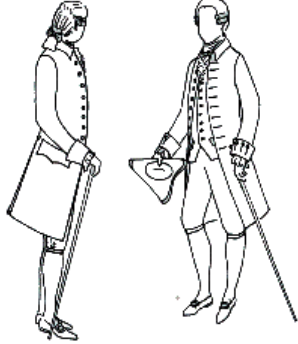
**KK 4304 \$15.00**

## **Man's Outer Breeches "Slops"**

**Sizes:** Multisized: Waist 32-52"  
A protective garment used by  
sailors (even pirates), fishermen,  
farmers and field workers.



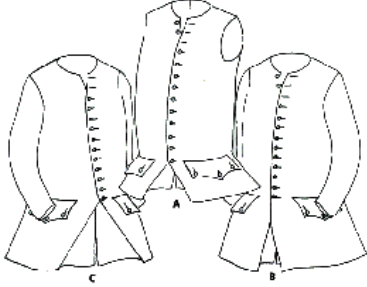
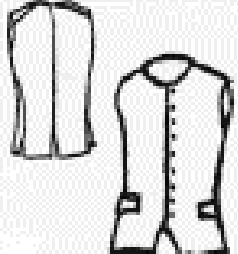

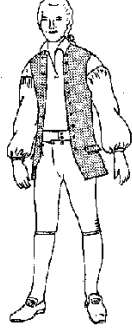



**SEE BACK OF CATALOG FOR ORDERING AND SHIPPING INFORMATION**

# Colonial - Regency

 <p><b>KK 4551 \$17.00</b>  <b>Man's Double-Breasted Short Jacket 1770-1800</b>  <b>Sizes:</b> Multisized: 38-50" Chest          This jacket features a full lining, welted pocket, a neck edging detail, as well as three sleeve variations.</p>	 <p><b>SF 202 \$11.00</b>  <b>Sleeved Waistcoat/Vest Pattern</b>  <b>Sizes:</b> Multisized; chest 36-50"          Traditional style worn by revolutionary forces in America during the latter part of 18th Century, includes sleeved and sleeveless variations</p>	 <p><b>PI 730 \$13.00</b>  <b>1770's Civilian Coat</b>  <b>Sizes:</b> (34-38), (40-44), (46-50)          Men's 1779 civilian jacket with functional pockets. Close fitting with tight sleeves, a round neck, and functional pockets.</p>
 <p><b>JR Coat \$21.00</b>  <b>1750's Coat with Military Variations</b>  <b>Pirate or Captains Coat</b>  <b>Sizes:</b> Chest Sizes 40-52". <b>Please specify. One size per package.</b>          Variations for the officer and enlisted man. Close fitting coat from the 1750's with full skirts, &amp; deep cuffs.</p>	 <p><b>SF 201 \$16.00</b>  <b>Regimental Coat Pattern</b>  <b>Sizes:</b> Multisized; chest 36-50"          Traditional style worn by revolutionary forces in America during the last half of the 18<sup>th</sup> C.</p>	 <p><b>PW Coat \$16.50</b>  <b>18th Century Coat</b>  <b>Sizes:</b> Multisized SM-XL          18th Century men's 18th Century military or civilian coat. Excellent for Captain's coat or Pirate coat for the Buccaneer period.</p>
 <p><b>PI 731 \$16.00</b>  <b>1770's Dress Coat</b>  <b>Sizes:</b> (34-38), (40-44), (46-50)          Men's 18th Century full formal dress coat. Looks elegant when pocket flaps, front, and cuffs are decorated with trim or more simply for a common man look.</p>	 <p><b>MF 19 \$16.00</b>  <b>Men's Frockcoat</b>  <b>Sizes:</b> Size 40-42" Chest Only          1770-1780 Men's Frock Coat. Optional pocket or decorative pocket flap.</p>	 <p><b>JR FC \$18.00</b>  <b>Frock Coat</b>  <b>Sizes:</b> Chest sizes 40-48" <b>Please specify. One size per package.</b>          Gentlemen's coats with collar, which can be made in either a fancy or sporting style.</p>

SEE BACK OF CATALOG FOR ORDERING AND SHIPPING INFORMATION

# Colonial - Regency

 <p><b>EV 68 \$9.25</b>  <b>Waistcoat and Vest</b>  <b>Sizes:</b> Multisized 36-50" chest          Widely worn by both civilians and Para-military outfits and the established military.</p>	 <p><b>PW WC \$16.50</b>  <b>Men's and Boy's Waistcoat</b>  <b>Sizes:</b> Multisized Men's S-XL, Boys 8-20. 18th Century sleeveless waistcoat with men's and boy's sizes.</p>	 <p><b>JR Waistcoats \$17.00</b>  <b>Waistcoats</b>  <b>Sizes:</b> Chest Sizes 40-48". <b>One size per pattern. Please specify.</b> 18th Century waistcoat with three options. Suitable for 1750's-1770's</p>
 <p><b>PI 745 \$12.25</b>  <b>Men's 1770's Waistcoat</b>  <b>Sizes:</b> (34-38), (40-44), 46-50) please specify size          A sleeveless vest for daily wear for all classes of the 18th Century. Made of brocade for upper classes and plain fabric for the common man.</p>	 <p><b>RH 150 \$11.50</b>  <b>18th Century Waistcoats</b>  <b>Sizes:</b> Multisized M-XL          Two styles of Colonial waistcoats. French and Revolutionary War 1760-1780.</p>	 <p><b>MF 06 \$11.00</b>  <b>Man's Waistcoat Circa 1770</b>  <b>Sizes:</b> Small (34-36"), Medium (38-40"), or Large (42-44" chest)          Dressier waistcoats are made of brocade, silk, satin or velvet.</p>
 <p><b>MF 04 \$19.00</b>  <b>Man's Great Coat</b>  <b>Sizes:</b> Multisized fits up to a 44" chest          Historically accurate men's greatcoat with two collar options.</p>	 <p><b>RH 152 \$14.00</b>  <b>Banyon</b>  <b>Sizes:</b> Multisized S-XXL          Gentleman's 18th Century informal, at-home wear. The banyon was worn over shirt, waistcoat, and breeches</p>	 <p><b>RH 201 \$20.50</b>  <b>1795-1820 Tailcoat</b>  <b>Size: (M-L), or (XL-XXL)</b>          Regency double breasted tailcoat</p>

SEE BACK OF CATALOG FOR ORDERING AND SHIPPING INFORMATION



## Colonial - Regency

 <p><b>LF 1750 \$28.00</b>  <b>French Soldier's Small Clothes</b>  <b>Multisized Chest 38"-46"</b>  Includes Military Cap, Waistcoat, Breeches, and Underpants. Also suitable for civilian impression</p>	 <p><b>LF 1755 \$28.00</b>  <b>Surtout Coat</b>  <b>Multisized Chest 38"-46"</b>  <b>Canadian Hooded Coat (Capot)</b></p>	 <p><b>PA 040 \$31.00</b>  <b>Napoleonic Era British Foot Soldier's Jacket circa 1806-1820</b>  <b>Army issue sizes: 36, 38, 40, 42, 44, or 46 (one size per package)</b>  Typical of British military uniforms for the years 1806 to 1820</p>
 <p><b>RH 707 \$11.50</b>  <b>Blanket Shirt</b>  <b>Sizes: (S-M), (M-L), (XL-XXL)</b>  Make from heavy wool for chilly days. Popular during the colonial period as a work shirt. Can also make a comfortable western expansion trapper or pioneer shirt.</p>	 <p><b>RH 186 \$14.00</b>  <b>Chemise Dress</b>  <b>Sizes: Multisized SM-XXL</b>  This gown, worn mostly between 1790 and 1808, was made popular by Marie Antoinette and her court.</p>	 <p><b>PA 031 \$26.00</b>  <b>Lewis &amp; Clark Era Empire Gown</b>  <b>Sizes: (8-14), (16-20), or (22-26)</b>  Pattern made from extant garment in the Wayne County Historical Museum.</p>
 <p><b>RH 187 \$11.50</b>  <b>Early 19th Century Gown</b>  <b>Sizes: (S-L) or (XL-XXL)</b>  By 1808 dresses became more fitted, necklines varied from day to eveningwear. This super easy pattern includes a chemisette to fill the neckline for daywear.</p>	 <p><b>RH 188 \$16.50</b>  <b>Gown with Overdress</b>  <b>Sizes: (S-M) (L-XXL)</b>  Early 19<sup>th</sup> Century style, popular because of the wide use of light muslin fabric worn both summer and winter.</p>	 <p><b>MM 18102 \$13.00</b>  <b>1800-1820 Open Robe</b>  <b>Sizes: Multisized Petite - X-Large</b>  1800-1820 Open Robe, also known as the tunic dress or vest, is a transparent over garment worn as a fashionable accessory.</p>

**SEE BACK OF CATALOG FOR ORDERING AND SHIPPING INFORMATION**

# Colonial - Regency



**FW 215 \$16.00**

**Empire Dress**

**Sizes:** Multisized 6-16

This pattern comes with 3 length options and short sleeves.



**SS 100-S \$4.50**

**Regency Gown Neckline Supplement**

**Sizes:** 6-26DD

Expand your Regency wardrobe. Illustrated instructions make construction easy

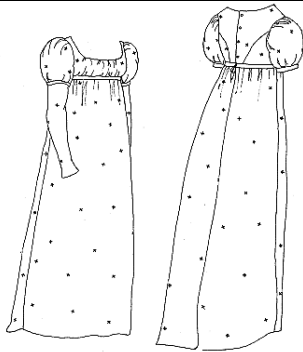


**RH 194 \$14.00**

**Riding Habit**

**Sizes:** (S-L) or (XL-XXL)

This 2-piece habit includes jacket and Jumper. And can be trimmed with a military flair. Blouse pattern included



**PI 460 \$16.50**

**1809 Daywear Dress**

**Sizes:** (6-10), (12-16), (18-22)

This high waisted dress from the Empire period has detachable lower sleeves



**SS 100 \$13.00**

**Upsize Supplement: \$5.50**

**Regency Gown Pattern**

**Sizes:** Multisized 6-18

Additional supplement available for sizing up to 18-26D  
Particularly appropriate for 1812 impressions and 1804 Lewis & Clark interpreters!

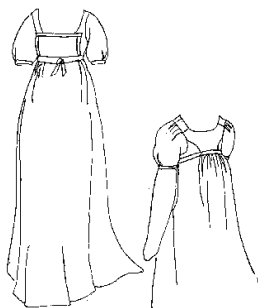


**WN 256 \$11.00**

**1795-1825 Overdress**

**Sizes:** Multisized 30-44" Bust

Overdress shown over dress pattern WN 257. Turban is hat pattern WN 714



**PI 464 \$15.75**

**Sizes:** (6-10), (12-16), (18-22)

**1815 Bibb Front Dress**

Diamond-back, high-waisted bodice with pinned Bibb in front Optional long sleeve pattern



**RH 189 \$11.50**

**Spencer Jacket**

**Sizes:** (S-L) or (XL-XXL)

Worn over the light muslin dresses for warmth, this jacket was worn from the early 1800's through the 1820's



**SS 101 \$11.00**










**Spencer Jacket**

**Sizes:** Multisized 6-26 DD.

Options for two different collars, and double breasted or "frog" closure at the front.



**SEE BACK OF CATALOG FOR ORDERING AND SHIPPING INFORMATION**

# Colonial - Regency

 <p><b>WN 257 \$19.00</b>  <b>1795-1825 Gown</b>  <b>Sizes:</b> Multisized 30-44" Bust          This high waisted dress from the Empire Period has detachable lower sleeve. Pictured with bonnet WN 710.</p>	 <p><b>MM 18101 \$20.50</b>  <b>1805-1812 Regency Frock</b>  <b>Sizes:</b> Multisized Petite - XL          This variation of the Regency gown features shirring in the bodice and shoulders, short or long.</p>	 <p><b>PI 461 \$11.00</b>  <b>1809 Spencer Jacket</b>  <b>Sizes:</b> (6-10), (12-16), (18-22)          Two different jackets in one pattern, the first has pleated tail and rounded collar. The second has ruffle at the neck and sleeves</p>
 <p><b>WN 255 \$11.00</b>  <b>Pelisse</b>  <b>Sizes:</b> Multisized 32-42" Bust          Coat worn from 1795-1825. Coat has pleated back. Bonnet is pattern WN 710.</p>	 <p><b>WN 209 \$11.00</b>  <b>1785-1795 Levite</b>  <b>Sizes:</b> (30-36") or (38-44")          Bust Overgown with a Fichu neckline and sash. Shown here over gown WN 208 and worn with hat WN 708 decorated for the period.</p>	 <p><b>RH 196 \$16.50</b>  <b>Redingote and Riding Coat</b>  <b>Sizes:</b> (S-L) or (XL-XXL)          High-waisted, caped coat with stand up collar. Simple, warm and pretty. Back can be fitted or full.</p>
 <p><b>TV 456 \$17.00</b>  <b>1856 Gathered Dress</b>  <b>Multisized XS-3XL</b>          Designed from fashion plates and original garments of the pre-civil war era. This style is suitable for the years 1855-1862</p>	 <p><b>MM 18201 \$16.00</b>  <b>1825-30 Day Dress</b>  <b>Sizes:</b> Sizes SM (2-6), Med (8-12), Lg (14-18), XL (20-24).          Appropriate for late Regency and early Romantic eras</p>	 <p><b>SS 113 \$15.00</b>  <b>Romantic Era Dresses</b>  <b>Multisized: 6-26</b>          Includes wide variety of dresses for day and evening, plus a jumper that can be worn over a blouse</p>

SEE BACK OF CATALOG FOR ORDERING AND SHIPPING INFORMATION

## Colonial - Regency

 <p><b>TV455 \$17.50</b> <b>1830s Romantic Era Dress</b> <b>Multisized 30-50" bust</b> Designed from fashion plates of 1832. This style is suitable for the years 1830 - 1836.</p>	 <p><b>WN 211 \$11.00</b> <b>Double Breasted Waistcoat</b> <b>Sizes:</b> Multisized 34-48" Chest Popular 1790-1820. French influenced styling</p>	 <p><b>WN 212 \$19.00</b> <b>Men's Frockcoat</b> <b>Sizes:</b> Multisized 43-48" Chest Popular from 1790 to 1820. French influenced styling. Shown with waistcoat WN 211</p>	
 <p><b>RH 153 \$11.50</b> <b>Gentlemen's Waistcoat</b> <b>Sizes:</b> (M-L) or (XL-XXL) 1790-1820's Double breasted waistcoat as seen on <i>Sense and Sensibility</i></p>	 <p><b>RH 205 \$14.00</b> <b>Workman or Stableman's Jacket</b> <b>Sizes:</b> (M-L) or (XL-XXL) This single-breasted jacket can be made up into an 18th or 19th Century jacket. Collar optional.</p>	 <p><b>RH 199 \$11.50</b> <b>Men's 1812 Waistcoat</b> <b>Sizes:</b> Multisized (M-XL) Straight bottom, stand-up collar, singled breasted style</p>	 <p><b>RH 207 \$11.50</b> <b>Narrow Fall Pants</b> <b>Sizes:</b> Multisized 30-40" Waist Early 19<sup>th</sup> Century style of drop front pants. Pre-1840.</p>
 <p><b>PA 032 \$31.00</b> <b>Select Size</b> <b>1804 US Army Issue Artillery Coat</b> <b>Sizes:</b> (35-39"), (41-45"), (47-51"), or (53-57") Chest This shell pattern may be used for military patterns circa 1796-1809.</p>	 <p><b>RH 204 \$20.50</b> <b>Dragoon Uniform</b> <b>Sizes:</b> (M-L) or (XL-XXL) Coatee has high collar; straight cut waist; short tails. Narrow fall pants included</p>	 <p><b>PI 733 \$14.00</b> <b>1812 Officer's Coatee</b> <b>Sizes:</b> S, M, or LG Copied from original worn by Jarvis Jackson held by the "Arsenal" in Frankfort, KY.</p>	 <p><b>RH 200 \$20.50</b> <b>Coachman's Coat</b> <b>Sizes:</b> (S-L) or (XL-XXL) This coat can be made with one to three capes. It has a split tail for riding.</p>

SEE BACK OF CATALOG FOR ORDERING AND SHIPPING INFORMATION